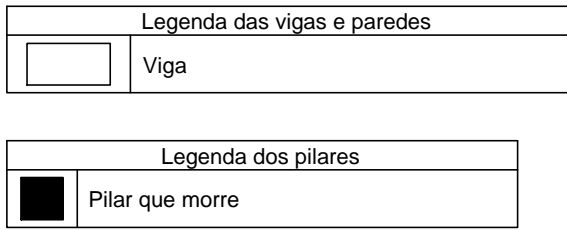
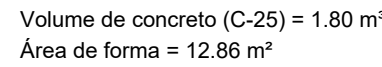
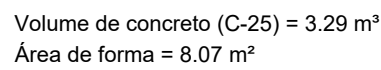
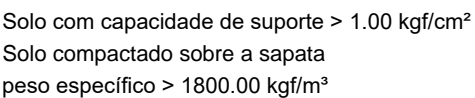
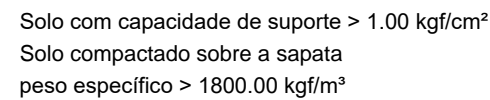


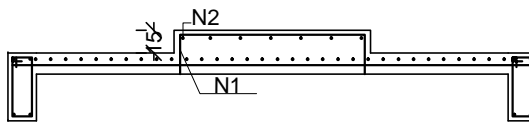
escala 1:50



escala 1:50

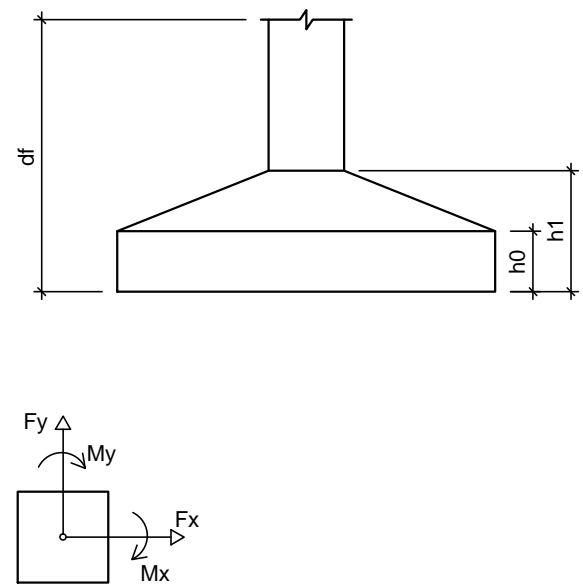


escala 1:50



escala 1:50

Volume de concreto (C-25) = 0,47 m<sup>3</sup>  
Área de forma = 1,11 m<sup>2</sup>



- 1- MEDIDAS, DIMENSÕES E COTAS EM CENTÍMETROS, EXCETO ONDE INDICADO.
- 2- ESCALAS INDICADAS.
- 3- CONCRETO ESTRUTURAL PARA SAPATAS, VIGAS, PILARES, LAJES:  
C-28 (fck=28Mpa AOS 28 DIAS).  
BRITA 0 (ZERO) E 1;  
ABATIMENTO 10+/-2cm;  
COBRIMENTO DAS ARMADURAS IGUAL A 3cm;  
MÓDULO DE ELASTICIDADE SECANTE (Es) = 217350kgf/cm².
- 4- RECOMENDA-SE A ADOÇÃO DE DISTANCIADORES PLÁSTICOS PARA CONCRETO DE TAMANHO ADEQUADO À PEÇA EM EXECUÇÃO.

FORMATO A1 - ALONGADO- INTERNO: 991 x 574 mm.  
EXTERNO: 1026 x 594 mm.